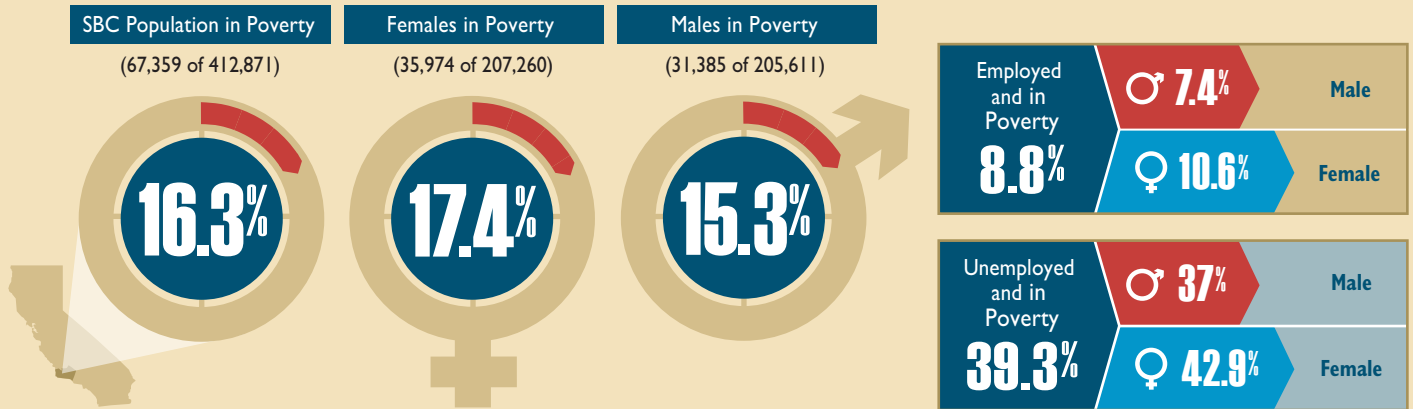


NOT YET EQUAL:

A Snapshot of Women in Santa Barbara County 2014

Inspired by Gloria Steinem's visit to Santa Barbara, the Orfalea Foundation collected some statistics that present a snapshot of Santa Barbara County's progress on the road toward equality for women. In some ways, women in Santa Barbara County enjoy advantages over women in other communities, but the fact remains that equality is still a goal, not an accomplishment. The full data set will be presented at www.WomensFestivals.org and www.WholeChildAction.org.

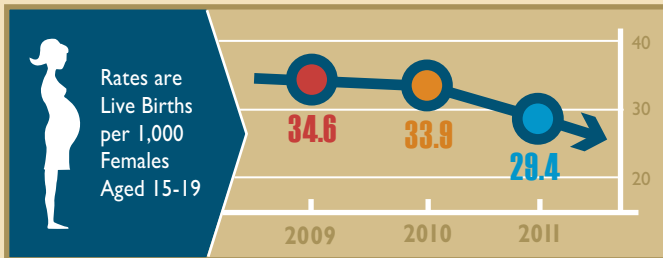
EMPLOYED OR UNEMPLOYED - WOMEN EXPERIENCE HIGHER POVERTY RATES THAN MEN



• This is despite the fact that women attain both higher graduation rates and higher overall education levels.

Data Source – ACS 2012 1-year estimates

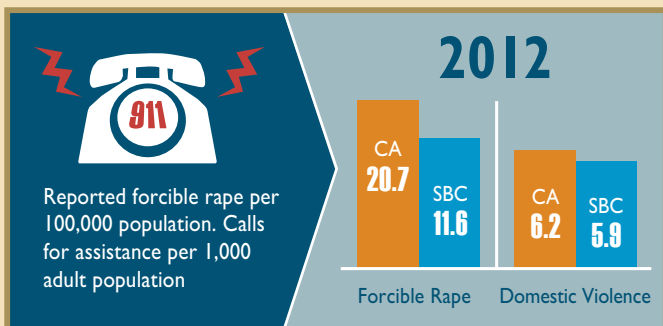
TEEN PREGNANCY IS DECLINING -HOWEVER...



• While the rate of teen pregnancy has declined in SBC, the Latina teen pregnancy rate is 14 times higher than white females.

Source: California Department of Public Health

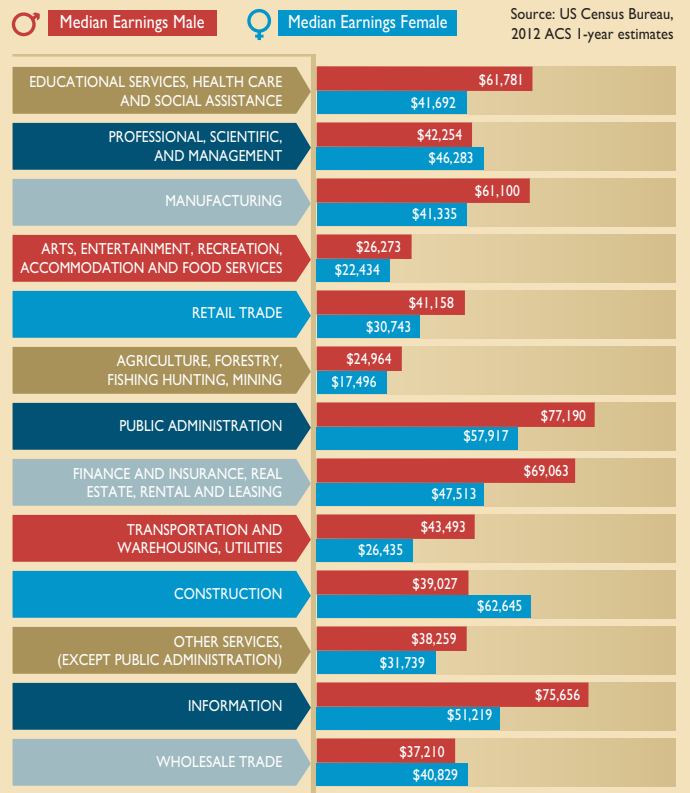
VIOLENCE AGAINST WOMEN IN SBC IS LOWER THAN STATE AVERAGES



Data Source: As cited on kidsdata.org

WOMEN EARN MORE IN SBC - BUT STILL LESS THAN MEN

• Nationally, women make up almost half of the workforce and make 77¢ for each dollar a man earns. • In SBC, women make up 39% of the workforce and earn 81¢ for every dollar a man earns.



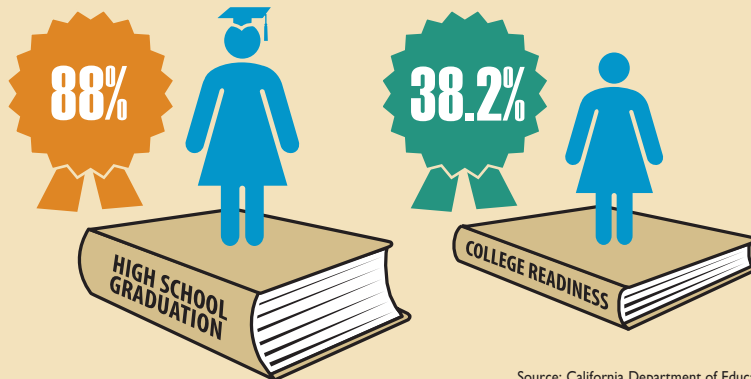
Source: US Census Bureau, 2012 ACS 1-year estimates

Listed in order of most to fewest SBC employees

NOT YET EQUAL: A Snapshot of Women in Santa Barbara County 2014

HIGH SCHOOL GRADUATION RATES ARE STRONG-BUT COLLEGE READINESS IS NOT

While the high school graduation rate for SBC females was 88% for the 2011-2012 school year, only 38.2% of these graduates were college ready

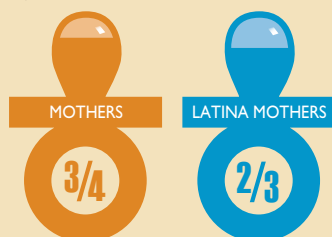


- 1 of 5 women over the age of 25 has less than a high school diploma.
- The poverty rate for women with less than a high school diploma is 1.5 times that for men.

Source: California Department of Education

75% OF MOTHERS RECEIVED PRENATAL CARE IN THE 1ST TRIMESTER-HOWEVER...

In 2011, 3/4 of mothers received prenatal care in the first trimester, but for Latina mothers, that number was only 2/3



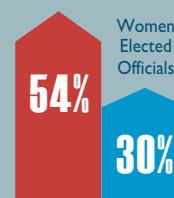
Source: California Department of Health

LESS THAN 1/3 OF SBC ELECTED OFFICIALS ARE WOMEN



Women make up 54% of voters in Santa Barbara County but only 30% of elected officials of city councils, mayors and the county board of supervisors are women

Women Voters in SBC

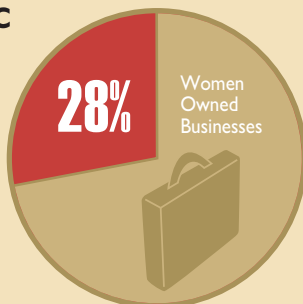


- Local women are well represented by notables such as State Senator Hannah-Beth Jackson, District Attorney Joyce Dudley, Congresswoman Lois Capps, and Senators Barbara Boxer and Diane Feinstein

Source: Political Data Incorporated

28% OF BUSINESSES IN SBC ARE WOMEN-OWNED

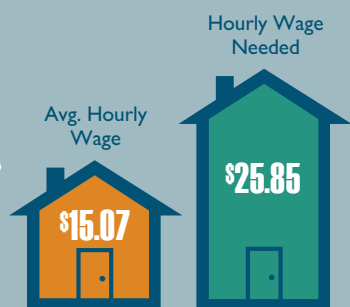
Women own 11,000 businesses in SBC, about 28% of all businesses in the county and consistent with the national average



Source: Pacific Coast Business Times

THE HIGH COST OF HOUSING AFFECTS EVERYONE IN SBC

- Average hourly wage of SBC renter: \$15.07
- Hourly wage needed for Fair Market Rent: \$25.85



- 59% of all renting households pay more than 30% of their income on rent

Source: Housing Trust Fund of Santa Barbara County. To learn more about Fair Market Rent and the challenges facing SBC renters, visit www.sbHousingTrust.org

CHILD CARE COSTS CONSUME 81% OF A MINIMUM WAGE ANNUAL INCOME



The average annual cost at a child care center for infants in SBC is \$13,613. The annual income for full time minimum wage work is \$16,640

\$13,613

Avg. Annual Cost of Child Care

\$16,640

Avg. Annual Income for Minimum Wage Worker

Source: U.S. Census Bureau, 2012 American Community Survey



www.CauseNow.org



www.WholeChildAction.org
www.OrfaleaFoundation.org



www.WomensFestivals.org

Not Yet Equal:
A Snapshot of Women in Santa Barbara County

February 13, 2014

Source Tables

Employed or Unemployed, Women Experience Higher Poverty Rates than Men

B17001: POVERTY STATUS IN THE PAST 12 MONTHS BY SEX BY AGE - Universe: Population for whom poverty status is determined

	Santa Barbara County, California	
	Estimate	Margin of Error
Total:	412,871	+/-2,158
Income in the past 12 months below poverty level:	67,359	+/-6,548
Male:	31,385	+/-3,464
Under 5 years	3,014	+/-920
5 years	581	+/-327
6 to 11 years	3,337	+/-1,069
12 to 14 years	1,530	+/-560
15 years	643	+/-391
16 and 17 years	1,420	+/-643
18 to 24 years	8,574	+/-1,600
25 to 34 years	3,140	+/-848
35 to 44 years	2,940	+/-818
45 to 54 years	2,144	+/-645
55 to 64 years	2,324	+/-762
65 to 74 years	986	+/-428
75 years and over	752	+/-366
Female:	35,974	+/-4,146
Under 5 years	2,930	+/-819
5 years	551	+/-366
6 to 11 years	3,210	+/-953
12 to 14 years	1,323	+/-583
15 years	381	+/-207
16 and 17 years	673	+/-418
18 to 24 years	10,620	+/-2,101
25 to 34 years	5,109	+/-1,090
35 to 44 years	4,107	+/-951
45 to 54 years	1,947	+/-735
55 to 64 years	2,016	+/-540
65 to 74 years	1,259	+/-532
75 years and over	1,848	+/-657
Income in the past 12 months at or above poverty level:	345,512	+/-6,982
Male:	174,226	+/-3,866
Under 5 years	10,631	+/-1,110
5 years	2,413	+/-702
6 to 11 years	11,680	+/-1,281
12 to 14 years	6,834	+/-1,353
15 years	2,480	+/-639
16 and 17 years	3,990	+/-748
18 to 24 years	21,099	+/-1,796
25 to 34 years	26,167	+/-987

35 to 44 years	21,796	+/-918
45 to 54 years	23,622	+/-862
55 to 64 years	20,309	+/-775
65 to 74 years	12,642	+/-571
75 years and over	10,563	+/-520
Female:	171,286	+/-4,370
Under 5 years	10,871	+/-973
5 years	2,178	+/-790
6 to 11 years	11,182	+/-1,326
12 to 14 years	7,018	+/-1,054
15 years	2,719	+/-630
16 and 17 years	4,013	+/-629
18 to 24 years	16,397	+/-2,273
25 to 34 years	21,212	+/-1,219
35 to 44 years	20,343	+/-1,012
45 to 54 years	24,649	+/-809
55 to 64 years	22,597	+/-614
65 to 74 years	14,220	+/-559
75 years and over	13,887	+/-771

Source: US Census Bureau, 2012 ACS 1-year estimates

S1701: POVERTY STATUS IN THE PAST 12 MONTHS

Subject	Santa Barbara County, California					
	Total		Below poverty level		Percent below poverty level	
	Estimate	Margin of Error	Estimate	Margin of Error	Estimate	Margin of Error
Population for whom poverty status is determined	412,871	+/-2,158	67,359	+/-6,548	16.3%	+/-1.6
AGE						
Under 18 years	95,602	+/-867	19,593	+/-3,373	20.5%	+/-3.5
Related children under 18 years	95,151	+/-974	19,142	+/-3,419	20.1%	+/-3.6
18 to 64 years	261,112	+/-1,773	42,921	+/-4,070	16.4%	+/-1.6
65 years and over	56,157	+/-534	4,845	+/-1,076	8.6%	+/-1.9
SEX						
Male	205,611	+/-1,836	31,385	+/-3,464	15.3%	+/-1.7
Female	207,260	+/-1,345	35,974	+/-4,146	17.4%	+/-2.0
RACE AND HISPANIC OR LATINO ORIGIN						
One race	N	N	N	N	N	N
White	310,523	+/-8,638	46,332	+/-5,925	14.9%	+/-1.8
Black or African American	8,701	+/-1,542	1,783	+/-658	20.5%	+/-8.0
American Indian and Alaska Native	N	N	N	N	N	N
Asian	19,256	+/-2,286	4,180	+/-1,514	21.7%	+/-6.4
Native Hawaiian and Other Pacific Islander	N	N	N	N	N	N
Some other race	53,775	+/-8,579	12,103	+/-4,108	22.5%	+/-7.6
Two or more races	15,564	+/-3,026	2,100	+/-888	13.5%	+/-5.2
Hispanic or Latino origin (of any race)	181,768	+/-1,275	38,504	+/-5,712	21.2%	+/-3.2
White alone, not Hispanic or Latino	195,210	+/-1,142	22,468	+/-3,070	11.5%	+/-1.6
EDUCATIONAL ATTAINMENT						
Population 25 years and over	260,579	+/-1,004	28,572	+/-2,977	11.0%	+/-1.1
Less than high school graduate	54,655	+/-3,596	12,274	+/-2,146	22.5%	+/-3.9
High school graduate (includes equivalency)	50,312	+/-3,734	5,668	+/-1,202	11.3%	+/-2.2
Some college, associate's degree	76,230	+/-4,277	7,022	+/-1,396	9.2%	+/-1.7
Bachelor's degree or higher	79,382	+/-3,587	3,608	+/-887	4.5%	+/-1.1
EMPLOYMENT STATUS						
Civilian labor force 16 years and over	207,672	+/-4,167	23,994	+/-3,027	11.6%	+/-1.4
Employed	189,203	+/-4,341	16,737	+/-2,073	8.8%	+/-1.1
Male	105,304	+/-3,329	7,842	+/-1,397	7.4%	+/-1.3
Female	83,899	+/-2,909	8,895	+/-1,432	10.6%	+/-1.7
Unemployed	18,469	+/-2,465	7,257	+/-1,753	39.3%	+/-6.9
Male	11,238	+/-1,763	4,157	+/-1,182	37.0%	+/-8.1
Female	7,231	+/-1,547	3,100	+/-976	42.9%	+/-9.4
WORK EXPERIENCE						
Population 16 years and over	327,365	+/-2,067	49,859	+/-4,628	15.2%	+/-1.4

Worked full-time, year-round in the past 12 months	123,863	+/-4,043	4,017	+/-982	3.2%	+/-0.8
Worked part-time or part-year in the past 12 months	94,108	+/-4,514	20,518	+/-2,820	21.8%	+/-2.8
Did not work	109,394	+/-3,542	25,324	+/-3,128	23.1%	+/-2.5
All Individuals below:						
50 percent of poverty level	29,646	+/-4,901	(X)	(X)	(X)	(X)
125 percent of poverty level	93,614	+/-7,534	(X)	(X)	(X)	(X)
150 percent of poverty level	117,479	+/-8,011	(X)	(X)	(X)	(X)
185 percent of poverty level	148,047	+/-8,306	(X)	(X)	(X)	(X)
200 percent of poverty level	159,770	+/-8,169	(X)	(X)	(X)	(X)
Unrelated individuals for whom poverty status is determined	93,246	+/-5,647	29,729	+/-3,753	31.9%	+/-3.2
Male	45,364	+/-3,331	13,412	+/-2,168	29.6%	+/-4.2
Female	47,882	+/-3,442	16,317	+/-2,445	34.1%	+/-4.0
Mean income deficit for unrelated individuals (dollars)	6,968	+/-435	(X)	(X)	(X)	(X)
Worked full-time, year-round in the past 12 months	31,059	+/-3,328	1,470	+/-650	4.7%	+/-2.0
Worked less than full-time, year-round in the past 12 months	30,516	+/-3,442	13,023	+/-2,260	42.7%	+/-5.5
Did not work	31,671	+/-2,968	15,236	+/-2,292	48.1%	+/-4.2
PERCENT IMPUTED						
Poverty status for individuals	32.1%	(X)	(X)	(X)	(X)	(X)

Source: US Census Bureau, 2012 ACS 1-year estimates

Less Than 1/3 of SBC Elected Officials are Women

Current gender of registered voters in Santa Barbara County

		% Female Voters
Female	Male	
102,685	88,823	54%

Source: Political Data, Inc. accessed January 2014

Makeup of local elected office in Santa Barbara County

	City Councils, Mayors, Supervisors in Santa Barbara County			
	Men	Women	Total	% Women
Buelton	3	2	5	40%
Carpenteria	5	0	5	0%
Goleta	4	1	5	20%
Guadalupe	3	2	5	40%
Lompoc	4	1	5	20%
Santa Barbara	5	2	7	29%
Santa Barbara County	33	14	47	30%
Santa Maria	3	2	5	40%
Solvang	3	2	5	40%
Total	33	14	47	30%

Source: CAUSE analysis of elected offices in Santa Barbara County

Teen Pregnancy is Declining, However...

Teen Pregnancy Rate

Santa Barbara County (Rates are live births per 1,000 females aged 15-19)			
Year	2009	2010	2011
Rates are live births per 1,000 females aged 15-19	34.6	33.9	29.4

Source: California Department of Public Health

Teen Births, by Race/Ethnicity

Santa Barbara County	Rate per 1,000					
	2005	2006	2007	2008	2009	2010
Hispanic/Latina	92.3	98.1	100.3	88.6	85.5	79.9
White	8.6	6.6	8.7	6.1	6.0	6.6

Definition: Number of births per 1,000 young women ages 15-19, by race/ethnicity of mother.

Data Source: As cited on kidsdata.org, California Dept. of Public Health, Center for Health Statistics, BirthStatistical Master Files; California Dept. of Finance, Race/EthnicPopulation with Age and Sex Detail, 1990-1999, 2000-2050, <http://www.dof.ca.gov> (Mar. 2012); Centers for Disease Control & Prevention, Natality data on WONDER (Mar. 2012).

Violence against Women is Lower than State Averages

Domestic Violence Calls for Assistance: 2012

Locations	Rate per 1,000
California	6.2
Santa Barbara County	5.9

Definition: Number of domestic violence calls for assistance per 1,000 adults ages 18-69.

Data Source: As cited on kidsdata.org, California Dept. of Justice, Criminal Justice Statistics Center, Domestic Violence-Related Calls for Assistance Database (1998-2009) and California Criminal Justice Profiles, 2010, 2011, and 2012. Accessed at <http://oag.ca.gov/crime/cjsc/criminal-justice-profiles> (Jun. 2013); California Dept. of Finance, Race/Ethnic Population with Age and Sex Detail, 1990-1999, 2000-2010, 2010-2060. Accessed at <http://www.dof.ca.gov> (May 2013).

Forcible Rape Rate per 100,000 Population

	California	SBC
2012	20.7	11.6
2011	20.4	
2010	22.3	

Source: Santa Barbara County Sheriff's Dept, California Criminal Justice Profile

High School Graduation Rates are High, but College Readiness is Not

12th Grade Graduates Completing all Courses Required for U.C. and/or C.S.U. Entrance

All Students		None Reported		American Indian or Alaska Native, Not Hispanic		Asian, Not Hispanic		Pacific Islander, Not Hispanic		Filipino, Not Hispanic		Hispanic or Latino, of Any Race		African American, Not Hispanic		White, Not Hispanic)		Two or More Races		Total	
SANTA BARBARA County (2011-12)	Gender	# of Grads	Grads with UC/CSU Required Courses	# of Grads	Grads with UC/CSU Required Courses	# of Grads	Grads with UC/CSU Required Courses	# of Grads	Grads with UC/CSU Required Courses	# of Grads	Grads with UC/CSU Required Courses	# of Grads	Grads with UC/CSU Required Courses	# of Grads	Grads with UC/CSU Required Courses	# of Grads	Grads with UC/CSU Required Courses	# of Grads	Grads with UC/CSU Required Courses	# of Grads	Grads with UC/CSU Required Courses
County Total	Female	6	3 (50.0 %)	13	4 (30.8 %)	51	33 (64.7 %)	6	2 (33.3 %)	32	13 (40.6 %)	1,303	347 (26.6 %)	40	11 (27.5 %)	766	426 (55.6 %)	57	29 (50.9 %)	2,274	868 (38.2 %)
	Male	7	1 (14.3 %)	14	2 (14.3 %)	62	37 (59.7 %)	4	2 (50.0 %)	46	18 (39.1 %)	1,321	219 (16.6 %)	43	6 (14.0 %)	784	387 (49.4 %)	48	18 (37.5 %)	2,329	690 (29.6 %)
	Total	13	4 (30.8 %)	27	6 (22.2 %)	113	70 (61.9 %)	10	4 (40.0 %)	78	31 (39.7 %)	2,624	566 (21.6 %)	83	17 (20.5 %)	1,550	813 (52.5 %)	105	47 (44.8 %)	4,603	1,558 (33.8 %)

Source: California Department of Education

Cohort Outcome Data for the Class of 2011-12 High School Graduation

Countywide Results for 42 Santa Barbara County						
Gender	Race/Ethnicity	Cohort Students	Cohort Graduates	Cohort Graduation Rate	Cohort Dropouts	Cohort Dropouts Rate
Female	All Students	2,514	2,213	88	196	7.8
Male	All Students	2,696	2,226	82.6	329	12.2

Source: California Department of Education

C15002: SEX BY EDUCATIONAL ATTAINMENT FOR THE POPULATION 25 YEARS AND OVER - Universe: Population 25 years and over

	Santa Barbara County, California	
	Estimate	Margin of Error
Total:	266,202	+/-558
Male:	131,930	+/-398
Less than 9th grade	17,188	+/-2,238
9th to 12th grade, no diploma	11,742	+/-1,714
High school graduate, GED, or alternative	25,692	+/-2,437
Some college, no degree	27,554	+/-2,433
Associate's degree	9,334	+/-1,342
Bachelor's degree	22,102	+/-1,882
Graduate or professional degree	18,318	+/-1,592
Female:	134,272	+/-476
Less than 9th grade	17,581	+/-1,761
9th to 12th grade, no diploma	8,934	+/-1,259
High school graduate, GED, or alternative	26,532	+/-2,375
Some college, no degree	28,568	+/-2,196
Associate's degree	12,661	+/-1,713
Bachelor's degree	25,086	+/-1,624
Graduate or professional degree	14,910	+/-1,541

Source: US Census Bureau, 2012 ACS 1-year estimates

Women Earn More in SBC, but Still Less Than Men

S2404: INDUSTRY BY SEX AND MEDIAN EARNINGS IN THE PAST 12 MONTHS (IN 2012 INFLATION-ADJUSTED DOLLARS) FOR THE FULL-TIME, YEAR-ROUND CIVILIAN EMPLOYED POPULATION 16 YEARS AND OVER

Subject	Santa Barbara County, California											
	Total		Male		Female		Median earnings (dollars)		Median earnings (dollars) for male		Median earnings (dollars) for female	
	Estimate	Margin of Error	Estimate	Margin of Error	Estimate	Margin of Error	Estimate	Margin of Error	Estimate	Margin of Error	Estimate	Margin of Error
Full-time, year-round civilian employed population 16 years and over	121,854	+/-4,100	60.7%	+/-1.4	39.3%	+/-1.4	41,837	+/-1,258	47,248	+/-4,632	38,049	+/-3,677
Agriculture, forestry, fishing and hunting, and mining:	9,359	+/-1,578	80.1%	+/-6.1	19.9%	+/-6.1	23,186	+/-2,880	24,964	+/-2,218	17,496	+/-2,069
Agriculture, forestry, fishing and hunting	8,578	+/-1,639	79.1%	+/-6.3	20.9%	+/-6.3	21,271	+/-3,963	23,804	+/-2,450	17,216	+/-2,251
Mining, quarrying, and oil and gas extraction	781	+/-389	90.9%	+/-14.6	9.1%	+/-14.6	102,443	+/-39,559	101,098	+/-31,692	250,000+	***
Construction	5,906	+/-1,260	96.3%	+/-3.2	3.7%	+/-3.2	39,061	+/-4,992	39,027	+/-4,950	62,645	+/-80,102
Manufacturing	12,853	+/-2,205	70.8%	+/-6.5	29.2%	+/-6.5	51,876	+/-4,292	61,100	+/-13,954	41,335	+/-8,786
Wholesale trade	3,072	+/-1,059	72.7%	+/-12.1	27.3%	+/-12.1	38,048	+/-7,015	37,210	+/-12,269	40,829	+/-34,913
Retail trade	10,718	+/-1,983	59.0%	+/-6.7	41.0%	+/-6.7	33,684	+/-5,757	41,158	+/-12,366	30,743	+/-3,251
Transportation and warehousing, and utilities:	6,556	+/-1,569	86.2%	+/-7.3	13.8%	+/-7.3	40,852	+/-9,040	43,493	+/-6,712	26,435	+/-4,192
Transportation and warehousing	5,051	+/-1,261	86.4%	+/-8.8	13.6%	+/-8.8	33,958	+/-13,327	38,289	+/-8,298	25,583	+/-1,262
Utilities	1,505	+/-766	85.3%	+/-15.6	14.7%	+/-15.6	72,956	+/-12,840	73,351	+/-5,875	60,777	+/-56,972
Information	3,552	+/-969	64.7%	+/-12.9	35.3%	+/-12.9	67,897	+/-21,979	75,656	+/-20,660	51,219	+/-19,393
Finance and insurance, and real estate and rental and leasing:	6,855	+/-1,152	44.1%	+/-11.6	55.9%	+/-11.6	52,182	+/-6,927	69,063	+/-38,957	47,513	+/-8,560
Finance and insurance	4,470	+/-929	38.1%	+/-13.1	61.9%	+/-13.1	57,283	+/-12,533	92,500	+/-19,052	50,567	+/-8,975
Real estate and rental and leasing	2,385	+/-765	55.2%	+/-15.2	44.8%	+/-15.2	46,347	+/-14,804	53,391	+/-26,843	42,447	+/-22,662
Professional, scientific, and management, and administrative and waste management services:	15,400	+/-2,333	64.5%	+/-6.6	35.5%	+/-6.6	44,308	+/-7,708	42,254	+/-10,466	46,283	+/-9,715
Professional, scientific, and technical services	9,041	+/-1,731	54.9%	+/-9.3	45.1%	+/-9.3	71,190	+/-10,973	82,535	+/-12,401	56,561	+/-14,722
Management of companies and enterprises	0	+/-197	-	**	-	**	-	**	-	**	-	**
Administrative and support and waste management services	6,359	+/-1,401	78.0%	+/-8.0	22.0%	+/-8.0	25,910	+/-2,367	25,693	+/-2,309	27,405	+/-20,089
Educational services, and health care and social assistance:	24,237	+/-2,192	36.5%	+/-4.1	63.5%	+/-4.1	48,020	+/-6,039	61,781	+/-3,976	41,692	+/-2,360
Educational services	10,381	+/-1,364	50.9%	+/-5.7	49.1%	+/-5.7	56,785	+/-6,707	61,896	+/-5,273	48,688	+/-6,160
Health care and social assistance	13,856	+/-1,593	25.8%	+/-5.3	74.2%	+/-5.3	41,300	+/-5,779	60,924	+/-19,942	38,345	+/-5,376
Arts, entertainment, and recreation, and accommodation and food services:	11,106	+/-1,924	53.6%	+/-8.7	46.4%	+/-8.7	24,163	+/-2,165	26,273	+/-2,781	22,434	+/-1,639
Arts, entertainment, and recreation	2,554	+/-871	51.5%	+/-17.2	48.5%	+/-17.2	25,915	+/-7,330	27,686	+/-18,371	23,294	+/-6,598
Accommodation and food services	8,552	+/-1,520	54.2%	+/-9.4	45.8%	+/-9.4	23,819	+/-2,315	25,840	+/-3,316	22,311	+/-1,759
Other services, except public administration	3,671	+/-937	52.3%	+/-11.8	47.7%	+/-11.8	33,970	+/-8,980	38,259	+/-12,082	31,739	+/-16,876
Public administration	8,569	+/-1,575	64.1%	+/-8.1	35.9%	+/-8.1	75,251	+/-8,980	77,190	+/-4,826	57,917	+/-14,202
PERCENT IMPUTED												
Industry	6.3%	(X)	(X)	(X)	(X)	(X)	(X)	(X)	(X)	(X)	(X)	(X)

Source: US Census Bureau, 2012 ACS 1-year estimates

75% of Mothers Received Prenatal Care in the 1st Trimester, However...

Infants Whose Mothers Received Prenatal Care in the First Trimester (All Years)

Locations	Percent																
	1995	1996	1997	1998	1999	2000	2001	2002	2003	2004	2005	2006	2007	2008	2009	2010	2011
Santa Barbara County	78.8%	78.9%	80.1%	80.6%	78.8%	78.4%	78.9%	80.4%	83.1%	82.5%	82.0%	80.5%	78.1%	73.9%	70.9%	73.3%	75.2%
African American/Black	0.778	0.754	0.798	0.864	0.823	0.849	0.836	0.845	0.762	0.81	0.783	0.818	0.706	0.759	0.75	0.774	
American Indian/Alaska Native	LNE	LNE	0.917	0.714	LNE	LNE	LNE	LNE	LNE	LNE	LNE	LNE	LNE	LNE	LNE	LNE	
Asian/Pacific Islander	74.3%	79.2%	83.3%	80.9%	77.9%	76.8%	81.6%	79.7%	85.9%	84.3%	85.0%	83.5%	87.6%	81.2%	84.0%	80.6%	
Hispanic/Latino	71.3%	71.3%	73.8%	74.4%	71.7%	71.5%	73.0%	74.6%	78.8%	78.3%	78.1%	75.9%	73.2%	67.9%	63.8%	67.4%	
White	89.8%	90.1%	89.3%	89.9%	89.9%	90.3%	89.4%	91.0%	91.1%	91.1%	90.6%	90.8%	89.2%	88.2%	86.8%	86.7%	
Multiracial	N/A	N/A	N/A	N/A	N/A	82.7%	81.7%	90.1%	90.7%	86.3%	82.5%	87.8%	82.6%	75.9%	76.2%	75.2%	

Source: California Department of Health

Child Care Costs Consume 81% of a Minimum Wage Annual Income

Annual Cost of Child Care, by Age Group and Type of Facility: 2012

Type of Facility: All; Age Group: All		
Santa Barbara County	Amount	
	Infant	Preschooler
Child Care Center	\$13,613	\$9,695
Family Child Care Home	\$7,839	\$7,387

Definition: Average annual cost, in dollars, of licensed child care by facility type (i.e., Child Care Center and Family Child Care Home) and age of child (i.e., infant or preschooler).

Data Source: As cited on kidsdata.org, The California Child Care Portfolio, California Child Care Resource & Referral Network. Accessed at <http://www.rrnetwork.org> (Nov. 2013); Cost data are from the Child Care Regional Market Rate Survey, 2012.

28% of Businesses in SBC are Women-Owned

11,000 women-owned businesses, representing about 28% of all businesses in the county, about the same as the national average.

Source: Pacific Coast Business Times

The High Cost of Housing Affects Everyone in SBC

Average hourly wage of SBC renter: \$15.07

Hourly wage needed for Fair Market Rent: \$25.85

- 59% of all renting households pay more than 30% of their income on rent

- *Out of Reach*, a side-by-side comparison of wages and rents throughout the United States, calculates the Housing Wage, defined as the hourly wage a worker must earn to afford the Fair Market Rent (FMR), based on the generally accepted affordability standard of paying no more than 30% of income for housing costs (National Low Income Housing Coalition, 2012). According to the report, in Santa Barbara the FMR for a two-bedroom apartment is \$1,344. In order to afford this level of rent and utilities – without paying more than 30% of income on housing – a household must earn \$4,480 monthly or \$53,760 annually. Assuming a 40-hour workweek, 52 weeks per year, this level of income translates into a Housing Wage of \$25.85 per hour, however the estimated hourly wage of Santa Barbara County renters is much lower than this, at only \$15.07 per hour. (Source: Housing Trust Fund of Santa Barbara County)